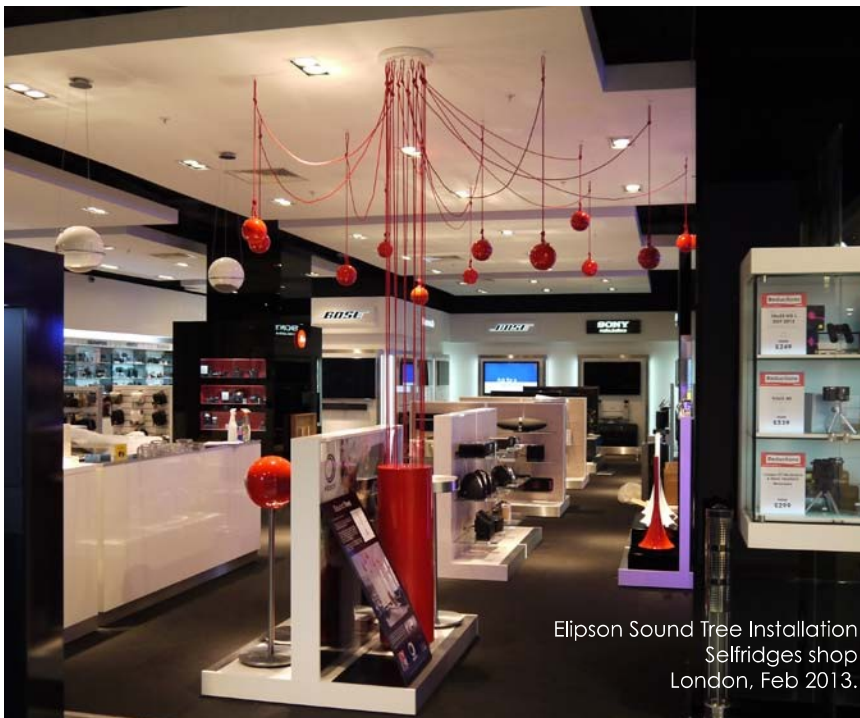
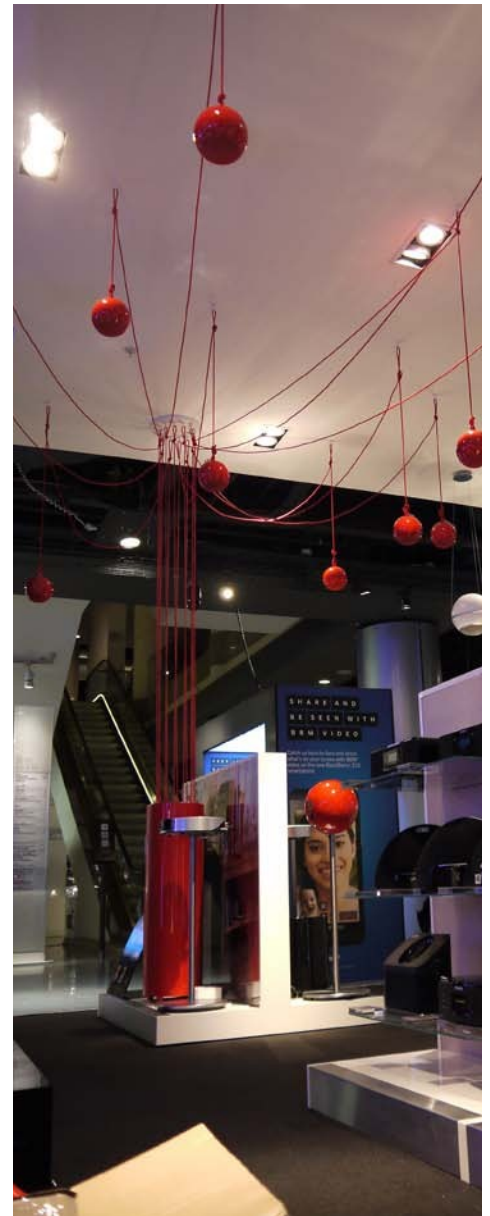




ELIPSON SOUND TREE AT SELFRIDGES, LONDON

SEFRIDGES&CO



Elipson Sound Tree Installation
Selfridges shop
London, Feb 2013.

Following installations in Milan and Paris, France's oldest and most respected speaker brand Elipson has teamed up with Selfridges* of London, to install the magical 'Sound Tree' design by Maurizio Galante, Tal Lancman & Jean-Yves Le Porcher for Elipson, a musical sculpture that's designed to absorb visitors with hi-fi quality sound and state of the art design. The Sound Tree will form the centerpiece of Selfridges' brand new TV & Audio department which also boasts walk-through headphone booths and Smart TV walls, together with this year's latest technology and gadgets from major consumer electronics brands.

*Selfridges Voted «Best Department Store in the World» Global Department Store Summit Paris 2012



ELIPSON PRESS CONTACT
Agence Véronique Lopez
Jean-Baptiste Duquesne
+33 (0)1 47 03 15 84
jb@agencelopez.com